

Electricity & Safety Unit

Teachers notes - Lesson 2 - Slide 1

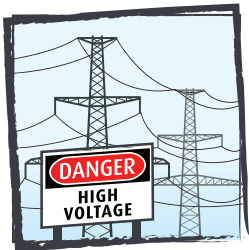
Unit overview

This second interactive whiteboard lesson is designed to complement Lesson 2 in the Electricity & Safety Year 6 lesson book. It will cover the following topics.

Lesson sequence	Overview
Electrical safety	Students complete an electrical safety officer test
Outside safety	Students identify a dangerous situation outside and describe what would happen to the person involved in the image
Electrical storm safety	Students complete a flash activity that demonstrates safety tips for an electrical storm
Safety around water	Students complete a code activity that reveals a safety message
Electricity substations	Students interact with five images and the teacher quizzes the students on which ones are substations
Dangerous situations	Students complete an activity and identify dangerous situations and describe how they would react
Planning for an electrical emergency	Students develop an electrical emergency plan
Know what to do in an emergency	Students work in groups to create a radio advertisement about electrical safety
Electricity quiz	Students are tested on what they have learned

Electricity & Safety Unit

Teachers notes - Lesson 2 - Slide 2



Electricity substations

You will find electricity substations and power equipment all over the place. They are behind fences, in buildings or on the side of the footpath and most have danger signs. Substations transform the voltage generated at power stations so it can be distributed to homes, schools and businesses. Sometimes they are near parks and play areas. Substations are safe, but you must follow the rules and stay away from them.

Remember:

- Sometimes it's tempting to ignore signs and fences around substations. Remember, the warnings are there for everyone's protection, so make sure you follow them!
- Substations contain special equipment with invisible hazards. You don't even have to touch anything to get hurt. Just being too close to some substation equipment can be dangerous and may even kill you!



Electrical emergencies

We all hope that we are never in an emergency involving electricity (e.g. damaged cords, fallen powerlines or a car accident), but if we are, it's important to know what to do. If you come across an emergency involving electricity:

Remember:

- Ensure your own safety.
- Warn others and get an adult.
- Ring 000.
- Turn the power off at the power point and remove the plug (if it is safe for you to do so) without touching the cord.